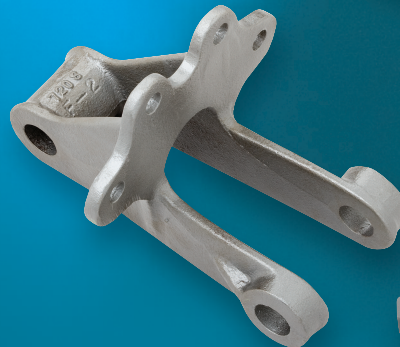
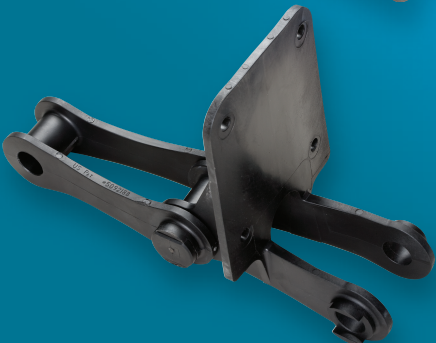
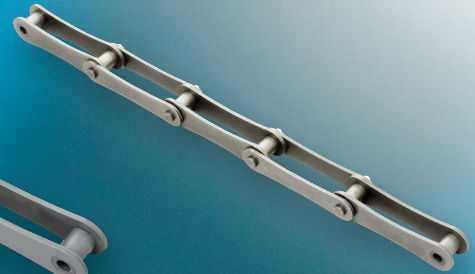
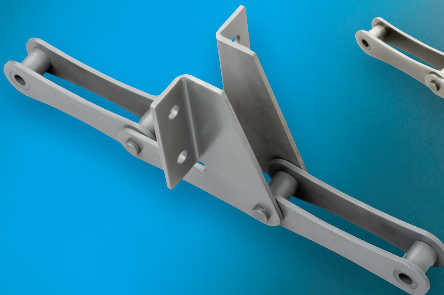
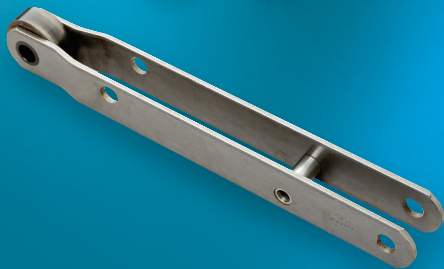
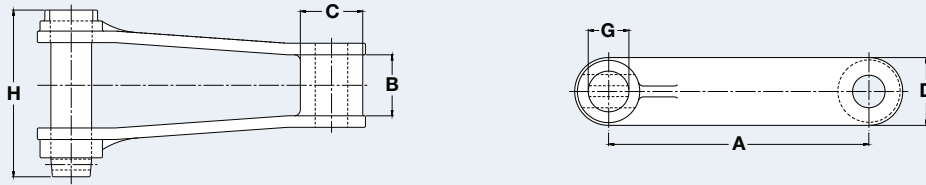


Water/Wastewater Treatment Chain

Every component of an environmental facility is critical to the effectiveness and efficiency of the operation. Renold Jeffrey offers a wide range of chains and components for the water/wastewater industry. Our products are designed to stand up to the rigorous and ongoing needs of a facility and a municipality. We manufacture 720 Series and 78 Series chains and sprockets from steel, cast, plastic, and stainless steel materials to meet your requirements. Our expertise is based on design experience, flexible manufacturing techniques, and our ability to respond to your requirements to produce reliable products that maintain the operation.

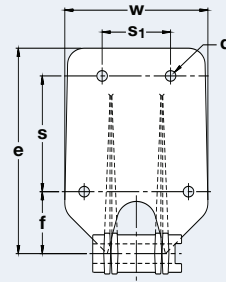
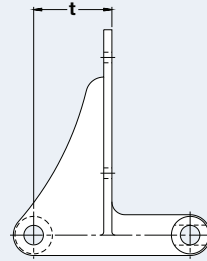




Engineering Class Cast Chain

Dimensions are in inches unless otherwise indicated.

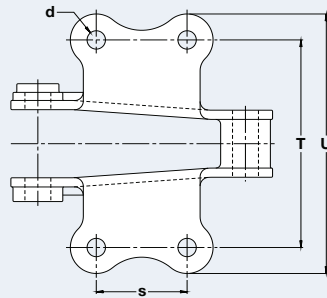
| Chain No. | Pitch | Inner Width Max | Barrel Diam Max | Plate Height Max | Pin Diam Max | Pin Length Max | Average Ultimate Strength | Rated Working Load | Weight |
|-----------|-------|-----------------|-----------------|------------------|--------------|----------------|---------------------------|--------------------|--------|
| | A | B | C | D | G | H | Lbs | Lbs | Lbs/Ft |
| 720S | 6.000 | 1.125 | 1.438 | 1.563 | 0.750 | 3.810 | 30,000 | 3,450 | 5.20 |
| CS720S | 6.000 | 1.125 | 1.438 | 1.563 | 0.750 | 3.810 | 30,000 | 3,450 | 5.40 |



F22-6 & F22-8 Cast Chain Attachments

Dimensions are in inches unless otherwise indicated.

| Chain No. | Att. Type | d | e | f | s | s ₁ | t | w |
|-----------|-----------|-------|-------|-------|-------|----------------|-------|-------|
| 720S | F22-6 | 0.406 | 6.000 | 2.375 | 2.625 | 3.750 | 3.000 | 5.375 |
| CS720S | | 0.406 | 6.000 | 2.375 | 2.625 | 3.750 | 3.000 | 5.375 |
| 720S | F22-8 | 0.406 | 7.875 | 2.375 | 4.500 | 3.750 | 3.000 | 5.500 |
| CS720S | | 0.406 | 7.875 | 2.375 | 4.500 | 3.750 | 3.000 | 5.750 |

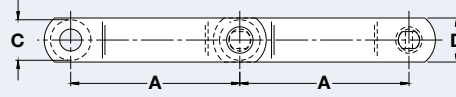
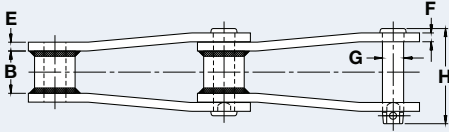


K-2 Cast Chain Attachments

Dimensions are in inches unless otherwise indicated.

| Chain No. | T | U | d | h | s | w |
|-----------|-------|-------|-------|-------|-------|-------|
| 720S | 6.000 | 7.500 | 0.531 | 0.938 | 2.625 | 4.125 |
| CS720S | 6.000 | 7.500 | 0.531 | 0.938 | 2.625 | 4.125 |

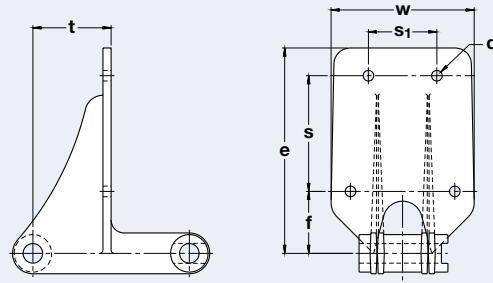
Contact Renold Jeffrey for weight specifications and for verification as dimensions are subject to change.



Engineering Class Welded Steel Chain

Dimensions are in inches unless otherwise indicated.

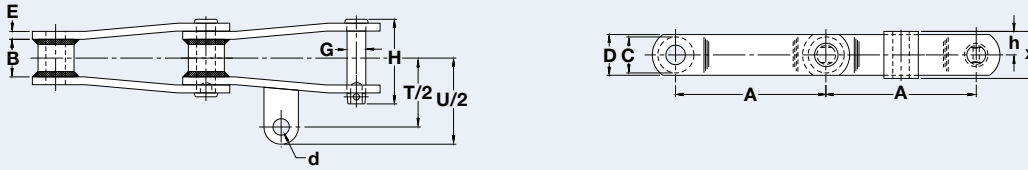
| Chain No. | Pitch | Inner Width Min | Barrel Diam Max | Plate Height Max | Inner Plate Thick Max | Outer Plate Thick Max | Pin Diam Max | Pin Length Max | Average Ultimate Strength | Rated Working Load | Weight |
|-----------|-------|-----------------|-----------------|------------------|-----------------------|-----------------------|--------------|----------------|---------------------------|--------------------|--------|
| | A | B | C | D | E | F | G | H | Lbs | Lbs | Lbs/Ft |
| WS720S | 6.000 | 1.500 | 1.438 | 1.560 | 0.310 | 0.310 | 0.750 | 3.438 | 42,500 | 5,300 | 5.70 |
| WS720SC | 6.000 | 1.500 | 1.438 | 1.560 | 0.310 | 0.310 | 0.750 | 3.438 | 42,500 | 5,300 | 5.70 |
| WS132P | 6.050 | 3.375 | 1.750 | 2.000 | 0.500 | 0.500 | 1.000 | 6.170 | 100,000 | 15,300 | 13.50 |



F22-6 & F22-8 Welded Steel Chain Attachments

Dimensions are in inches unless otherwise indicated.

| Chain No. | Att. Type | d | e | f | s | s ₁ | t | w |
|-----------|-----------|-------|-------|-------|-------|----------------|-------|-------|
| WS720S | F22-6 | 0.406 | 6.000 | 2.375 | 2.625 | 3.750 | 3.000 | 5.000 |
| WS720SC | | 0.406 | 6.000 | 2.375 | 2.625 | 3.750 | 3.000 | 5.000 |
| WS720S | F22-8 | 0.406 | 7.875 | 2.375 | 4.500 | 3.750 | 3.000 | 5.000 |
| WS720SC | | 0.406 | 7.875 | 2.375 | 4.500 | 3.750 | 3.000 | 5.000 |

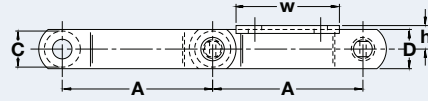
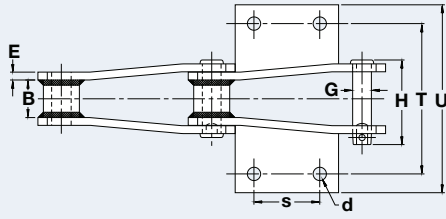


A-42 1-7/8 Welded Steel Chain Attachments

Dimensions are in inches unless otherwise indicated.

| Chain No. | A | B | C | D | E | G | H | T/2 | U/2 | d | h | x |
|-----------|-------|-------|-------|-------|-------|-------|-------|-------|-------|-------|-------|-------|
| WS720S | 6.000 | 1.500 | 1.437 | 1.625 | 0.313 | 0.750 | 3.438 | 2.750 | 3.438 | 0.656 | 0.937 | 1.875 |

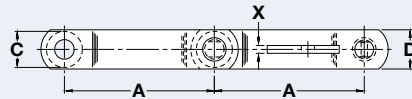
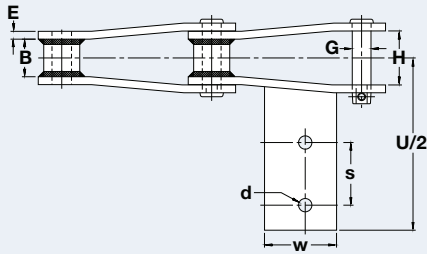
Contact Renold Jeffrey for weight specifications and for verification as dimensions are subject to change.



K-2 Welded Steel Chain Attachments

Dimensions are in inches unless otherwise indicated.

| Chain No. | A | B | C | D | E | G | H | T | U | d | h | s | w |
|-----------|-------|-------|-------|-------|-------|-------|-------|-------|-------|-------|-------|-------|-------|
| WS720S | 6.000 | 1.500 | 1.438 | 1.562 | 0.313 | 0.750 | 3.438 | 6.000 | 7.500 | 0.531 | 0.938 | 2.625 | 4.125 |
| WS132P | 6.050 | 3.375 | 1.750 | 2.000 | 0.500 | 1.000 | 6.172 | 7.500 | 9.125 | 0.531 | 1.250 | 2.750 | 4.000 |

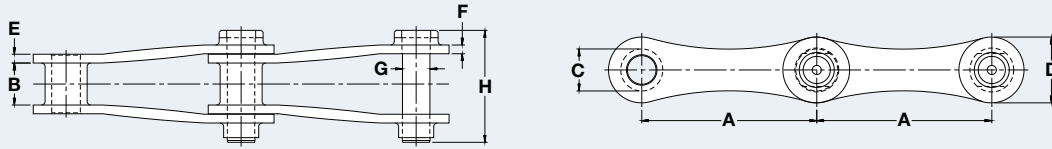


AD-474 Welded Steel Chain Attachments

Dimensions are in inches unless otherwise indicated.

| Chain No. | A | B | C | D | E | G | H | U/2 | X | d | s | w |
|-----------|-------|-------|-------|-------|-------|-------|-------|-------|-------|-------|-------|-------|
| WS720S | 6.000 | 1.500 | 1.437 | 1.625 | 0.313 | 0.750 | 3.438 | 6.875 | 0.313 | 0.531 | 2.500 | 2.875 |

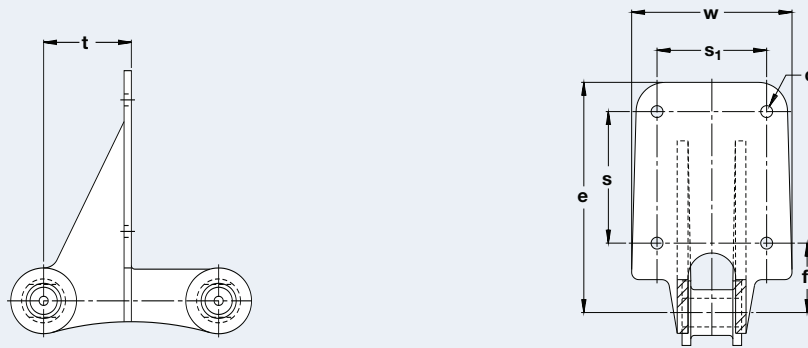
Contact Renold Jeffrey for weight specifications and for verification as dimensions are subject to change.



Engineering Class NCS Plastic Chain

Dimensions are in inches unless otherwise indicated.

| Chain No. | Pitch | Inner Width Min | Barrel Diam Max | Plate Height Max | Inner Plate Thick Max | Outer Plate Thick Max | Pin Diam Max | Pin Length Max | Average Ultimate Strength | Rated Working Load | Weight |
|-----------|-------|-----------------|-----------------|------------------|-----------------------|-----------------------|--------------|----------------|---------------------------|--------------------|--------|
| | A | B | C | D | E | F | G | H | Lbs | Lbs | Lbs/Ft |
| NCS720S | 6.000 | 1.438 | 1.438 | 2.250 | 0.297 | 0.297 | 0.938 | 3.828 | 6,000 | 2,600 | 1.40 |



F22-6 & F22-8 NCS Plastic Chain Attachments

Dimensions are in inches unless otherwise indicated.

| Chain No. | Att. Type | d | e | f | s | s ₁ | t | w |
|-----------|-----------|-------|-------|-------|-------|----------------|-------|-------|
| NCS720S | F22-6 | 0.406 | 6.188 | 2.375 | 2.625 | 3.750 | 2.375 | 5.500 |
| NCS720S | F22-8 | 0.406 | 7.875 | 2.375 | 4.500 | 3.750 | 2.375 | 5.500 |

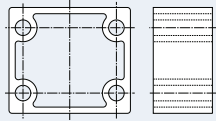
Contact Renold Jeffrey for weight specifications and for verification as dimensions are subject to change.

Water/Wastewater Treatment Chain

Components

Filler Blocks

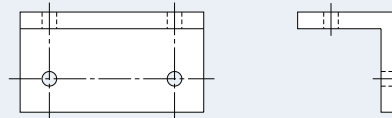
Renold Jeffrey Filler Blocks are manufactured from black polypropylene and are available for F22-6 and F22-8 Attachments.



Filler Block

Wear Shoes

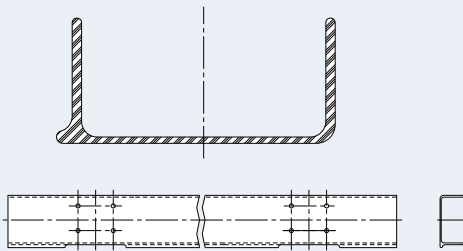
Renold Jeffrey Wear Shoes are furnished in UHMW polyethylene. Carrying Wear Shoes measure 3 x 3 x 1/2 x 5-1/2 inches. Return Wear Shoes measure 3 x 3 x 1/2 x 4-1/2 inches.



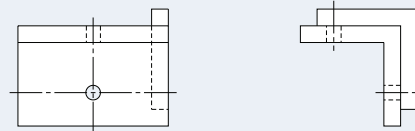
Carrying Wear Shoe

Flights

Our fiberglass Flights are C-channel type construction and measure 3 x 6 or 3 x 8 inches, as required.



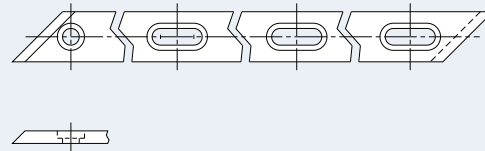
Flight



Return Wear Shoe

Wear Strips

UHMW polymer Wear Strips are made from 100-percent virgin materials. Standard thickness is 3/8 or 1/2 inch, with varying widths as required by the application.

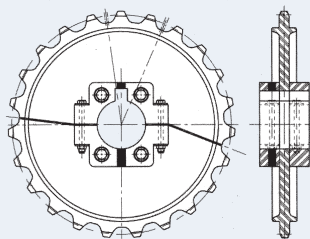


Wear Strip

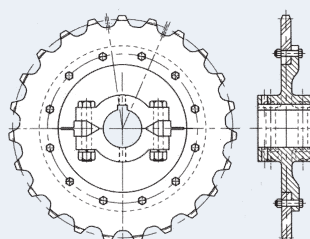
Renold Jeffrey Sprockets

Renold Jeffrey Sprockets for water/wastewater treatment applications are made from 100-percent UHMW polyethylene or a combination of cast iron hubs and UHMW tooth segments. All are split for easy installation and reversible

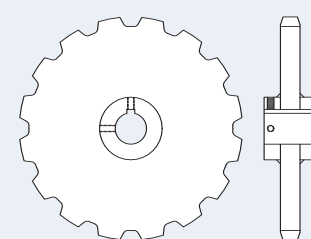
to extend wear life. Cast iron and steel-carved, flame-hardened sprockets are also available in split, combination, or solid design. Stainless steel hardware is standard.



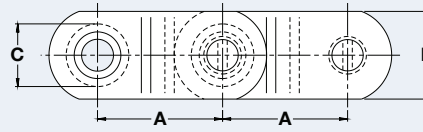
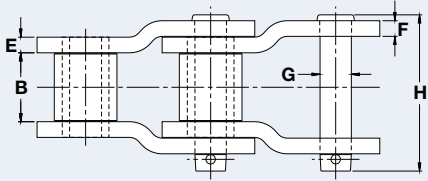
UHMW Sprocket



Combination Sprocket



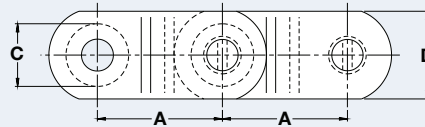
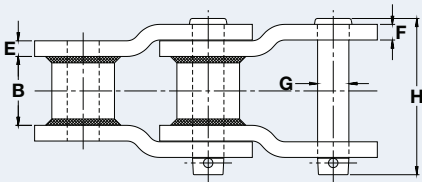
Steel-Carved and Cast Iron Sprocket



Engineering Class Drive Chain

Dimensions are in inches unless otherwise indicated.

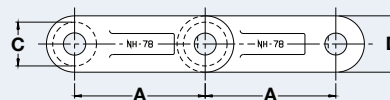
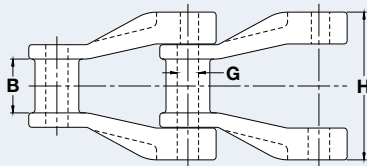
| Chain No. | Pitch | Inner Width Min | Roller Diam Max | Plate Height Max | Inner Plate Thick Max | Outer Plate Thick Max | Pin Diam Max | Pin Length Max | Average Ultimate Strength | Rated Working Load | Weight |
|-----------|-------|-----------------|-----------------|------------------|-----------------------|-----------------------|--------------|----------------|---------------------------|--------------------|--------|
| | A | B | C | D | E | F | G | H | Lbs | Lbs | Lbs/Ft |
| JS882 | 2.609 | 1.125 | 0.875 | 1.125 | 0.250 | 0.250 | 0.438 | 2.560 | 26,000 | 2,500 | 3.60 |



Engineering Class Welded Steel Drive Chain

Dimensions are in inches unless otherwise indicated.

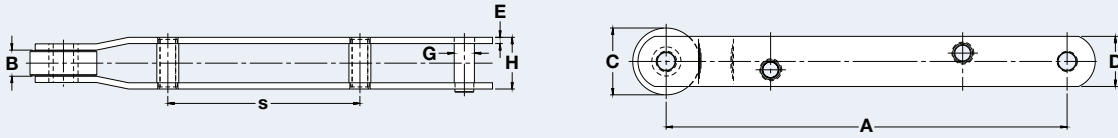
| Chain No. | Pitch | Inner Width Min | Barrel Diam Max | Plate Height Max | Inner Plate Thick Max | Outer Plate Thick Max | Pin Diam Max | Pin Length Max | Average Ultimate Strength | Rated Working Load | Weight |
|-----------|-------|-----------------|-----------------|------------------|-----------------------|-----------------------|--------------|----------------|---------------------------|--------------------|--------|
| | A | B | C | D | E | F | G | H | Lbs | Lbs | Lbs/Ft |
| WS78P | 2.609 | 1.125 | 0.875 | 1.125 | 0.250 | 0.250 | 0.500 | 3.000 | 24,000 | 3,000 | 4.20 |



Engineering Class Nonmetallic Drive Chain

Dimensions are in inches unless otherwise indicated.

| Chain No. | Pitch | Inner Width Min | Roller Diam Max | Plate Height Max | Pin Diam Max | Pin Length Max | Rated Working Load | Weight |
|-----------|-------|-----------------|-----------------|------------------|--------------|----------------|--------------------|--------|
| | A | B | C | D | G | H | Lbs | Lbs/Ft |
| NH78 | 2.609 | 1.100 | 0.875 | 1.140 | 0.425 | 2.970 | 1,740 | 1.25 |

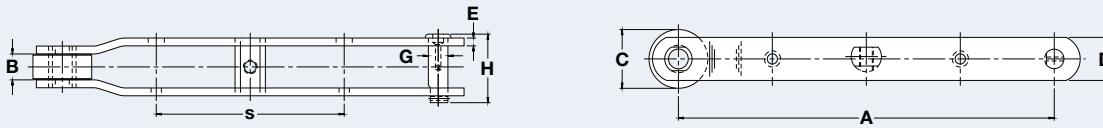


Engineering Class Style 1 Waterscreen Chain

Dimensions are in inches unless otherwise indicated.

| Chain No. | Style | Pitch | Inner Width Min | Roller Diam Max | Plate Height Max | Plate Thick Max | Pin Diam Max | Pin Length Max | | Average Ultimate Strength | Rated Working Load |
|-----------|-------|--------|-----------------|-----------------|------------------|-----------------|--------------|----------------|--------|---------------------------|--------------------|
| | | A | B | C | D | E | G | H | s | Lbs | Lbs |
| 2929 | 1 | 24.000 | 1.563 | 4.000 | 3.000 | 0.375 | 1.210 | 3.190 | 11.500 | 65,900 | 9,700 |
| 2929H | 1 | 24.000 | 1.560 | 4.000 | 3.000 | 0.500 | 1.210 | 3.690 | 11.500 | 88,000 | 10,800 |

Available with carbon, alloy, or stainless steel parts.

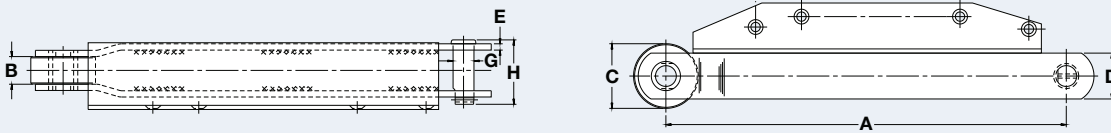


Engineering Class Style 2 Waterscreen Chain

Dimensions are in inches unless otherwise indicated.

| Chain No. | Style | Pitch | Inner Width Min | Roller Diam Max | Plate Height Max | Plate Thick Max | Pin Diam Max | Pin Length Max | | Average Ultimate Strength | Rated Working Load |
|-----------|-------|--------|-----------------|-----------------|------------------|-----------------|--------------|----------------|--------|---------------------------|--------------------|
| | | A | B | C | D | E | G | H | s | Lbs | Lbs |
| 1960 | 2 | 24.000 | 1.656 | 3.750 | 2.750 | 0.375 | 1.250 | 3.870 | 12.000 | 75,000 | 10,500 |
| 1960H | 2 | 24.000 | 1.656 | 3.750 | 2.750 | 0.500 | 1.250 | 4.370 | 12.000 | 100,000 | 11,500 |

Available with carbon, alloy, or stainless steel parts.



Engineering Class Style 3 Waterscreen Chain

Dimensions are in inches unless otherwise indicated.

| Chain No. | Style | Pitch | Inner Width Min | Roller Diam Max | Plate Height Max | Plate Thick Max | Pin Diam Max | Pin Length Max | | Average Ultimate Strength | Rated Working Load |
|-----------|-------|--------|-----------------|-----------------|------------------|-----------------|--------------|----------------|--|---------------------------|--------------------|
| | | A | B | C | D | E | G | H | | Lbs | Lbs |
| 3260 | 3 | 24.000 | 1.656 | 3.875 | 2.750 | 0.375 | 1.250 | 3.860 | | 56,600 | 10,500 |
| 3260H | 3 | 24.000 | 1.656 | 3.875 | 2.750 | 0.500 | 1.250 | 4.360 | | 75,500 | 11,500 |
| 3262 | 3 | 24.000 | 1.656 | 3.750 | 2.750 | 0.375 | 1.250 | 4.110 | | 56,600 | 11,500 |

Available with carbon, alloy, or stainless steel parts.

Contact Renold Jeffrey for weight specifications and for verification as dimensions are subject to change.