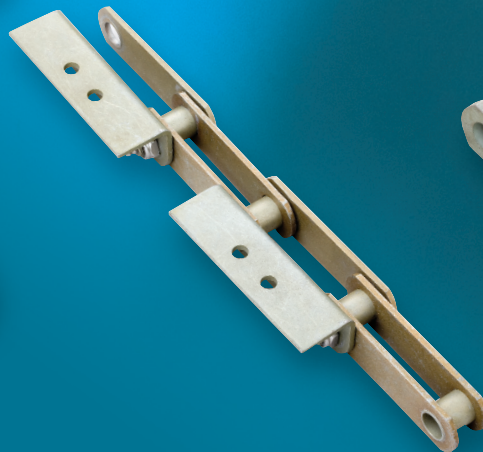


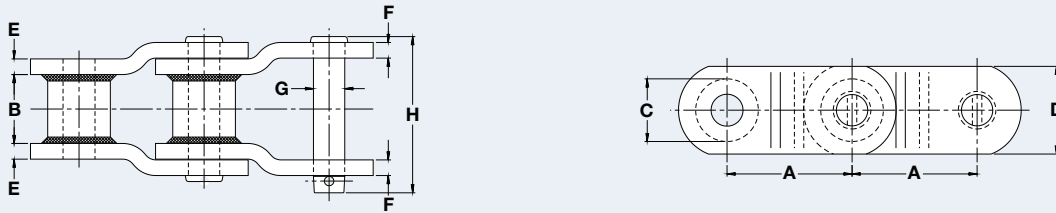
## Theme Park Chain

Renold Jeffrey Lift and Water Ride Chains are designed to meet the safety requirements of the theme park industry. Years of testing in our R&D facilities ensures reliable, trouble-free operation in the field.

Tight control over pin and bushing contact ensures maximum wear life and toughness. Materials and treatments for component parts provide maximum wear resistance while maintaining necessary toughness. Pins and bushings are centerless ground to improve wear life and provide ideal fits between mating parts.

All chain parts are constructed to maximize chain life. Component part design eliminates stress concentrations to maximize fatigue life. The full, round design of pins and bushings eliminates stress concentrations in plate holes and maximizes fatigue life. Plate hole size and finish are closely controlled for optimum press fits. Heat treatment and surface finishes ensure longer fatigue life.



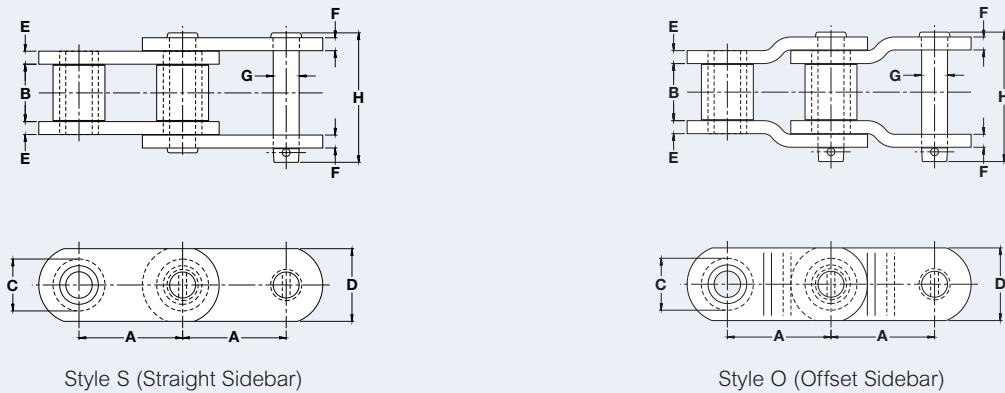


## Engineering Class Welded Steel Type Lift Chain

Dimensions are in inches unless otherwise indicated.

Chain No.	Pitch	Inner Width Max	Barrel Diam Max	Plate Height Max	Plate Thick Max	Pin Diam Max	Pin Length Max	Average Ultimate Strength	Rated Working Load	Weight
	A	B	C	D	E/F	G	H	Lbs	Lbs	Lbs/Ft
WS82TP*	3.075	1.750	1.219	1.250	0.250	0.563	3.219	37,500	4,400	5.60
WS124PTP	4.000	2.063	1.438	1.500	0.375	0.750	4.188	60,000	7,350	8.50
WS124HDPTP*	4.063	2.000	1.625	2.000	0.500	0.875	4.670	114,500	9,150	13.64
WS126TP	4.080	2.000	1.750	2.000	0.500	1.000	4.703	101,000	10,500	14.30
WS126HTP	4.080	2.000	1.750	2.250	0.500	1.000	4.578	140,000	10,500	15.60
WS132PTP	6.050	3.375	1.750	2.000	0.500	1.000	5.953	100,000	14,500	13.50
WS132ATP (ALLOY)	6.050	3.375	1.750	2.000	0.500	1.000	6.172	138,500	15,300	13.50
WS855ATP (ALLOY)	6.050	3.313	1.750	2.500	0.563	1.125	6.156	205,000	17,450	14.50

\*Can be furnished with oil hole in bushing



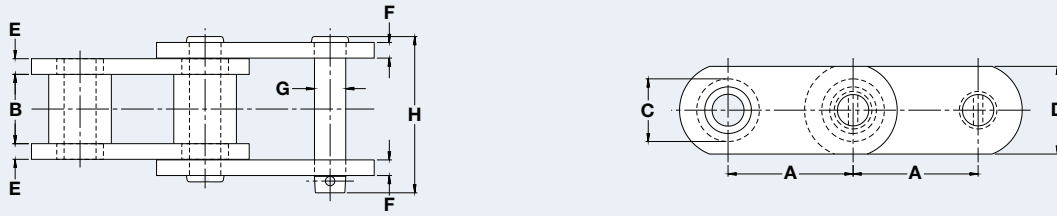
Style S (Straight Sidebar)

Style O (Offset Sidebar)

## Engineering Class Roller Type Lift Chain

Dimensions are in inches unless otherwise indicated.

Chain No.	Sidebar Style	Pitch	Inner Width Max	Roller Diam Max	Plate Height Max	Inner Plate Thick Max	Outer Plate Thick Max	Pin Diam Max	Pin Length Max	Average Ultimate Strength	Rated Working Load	Weight
		A	B	C	D	E	F	G	H	Lbs	Lbs	Lbs/Ft
JS4014TP	O	4.063	1.938	1.750	2.250	0.500	0.500	0.875	4.453	140,000	9,000	15.40
4073ATP	S	4.073	2.062	1.781	2.375	0.500	0.562	0.938	4.590	170,000	10,500	15.60
JS4080TP	O	4.080	1.938	1.750	2.250	0.500	0.500	0.875	4.710	140,000	9,000	15.50
3605TP	S	6.050	3.375	1.750	2.000	0.500	0.500	0.875	6.047	110,000	13,400	15.50

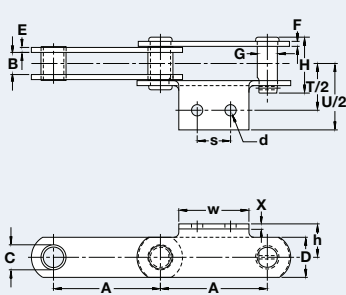


Engineering Class Steel Bushed/Knuckle Type Lift Chain

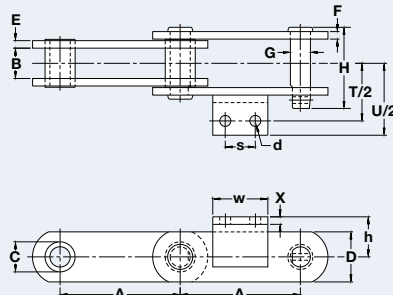
Dimensions are in inches unless otherwise indicated.

Chain No.	Pitch	Inner Width Max	Bushing/Knuckle Diam Max	Plate Height Max	Inner Plate Thick Max	Outer Plate Thick Max	Pin Diam Max	Pin Length Max	Average Ultimate Strength	Rated Working Load	Weight
	A	B	C	D	E	F	G	H	Lbs	Lbs	Lbs/Ft
6102½MTP	4.040	2.188	1.375	1.750	0.375	0.375	0.750	4.313	70,000	7,900	9.20
6099TP*	4.040	2.250	1.375	2.000	0.375	0.375	0.875	4.270	72,000	9,200	10.70
6100TP*	4.040	2.250	1.375	2.250	0.375	0.375	0.875	4.125	110,000	9,200	12.17
6440TP	4.040	1.375	1.500	2.500	0.375	0.375	1.000	3.188	97,000	7,400	12.30
6111TP	4.760	2.620	1.438	2.000	0.375	0.375	0.750	4.660	50,000	9,300	11.20
6050TP	6.050	3.125	1.750	3.000	0.500	0.500	1.000	5.703	177,000	14,400	19.40

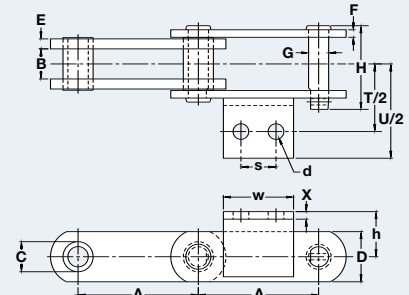
\*Can be furnished with oil holes in the bushing/knuckle.



6233RC with A-2 Attachment



6247B with A-2 ½ Attachment



6248PB with A-2 ½ Attachment

Engineering Class Steel Bushed/Knuckle Type Water Ride Chain

Dimensions are in inches unless otherwise indicated.

Chain No.	Pitch	Inner Width Max	Bushing/Knuckle Diam Max	Plate Height Max	Inner Plate Thick Max	Outer Plate Thick Max	Pin Diam Max	Pin Length Max	T/2	U/2	X	d	h	s	w	Average Ultimate Strength	Rated Working Load	Weight
	A	B	C	D	E	F	G	H	T/2	U/2	X	d	h	s	w	Lbs	Lbs	Lbs/Ft
6233RC** A-2	4.000	0.830	0.940	1.500	0.190	0.190	0.750	2.330	1.750	2.480	0.190	0.420	1.250	1.250	2.620	16,000	3,400	4.80
6247B A-2 ½	6.000	1.520	1.500	2.500	0.375	0.375	1.000	4.280	2.870	3.590	0.375	0.546	2.000	1.500	2.750	55,000	8,350	12.10
6248PB A-2 ½	6.000	1.500	1.500	2.500	0.500	0.375	1.000	4.172	3.375	4.703	0.375	0.781	2.250	1.750	3.500	116,000	9,200	14.20

\*\*Can be furnished with full A-2 Attachment

Water Ride Chains can be furnished with zinc or Hydro-Service® plating, lube fittings, and locknuts on connecting links.