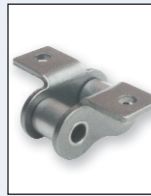


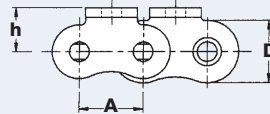
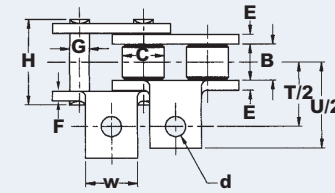
Bent Lug Attachments



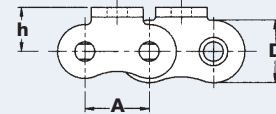
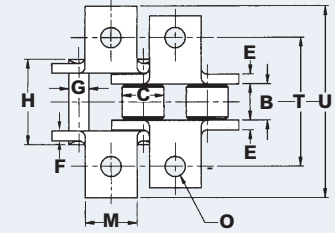
A-1



K-1



A-1 (Bent Lug 1 Side -1 Hole)



K-1 (Bent Lug 2 Sides -1 Hole)

Syno® A-1 & K-1 Attachment Dimensions

Dimensions are in inches unless otherwise indicated.

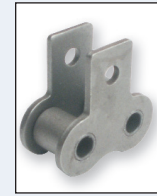
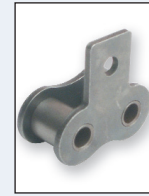
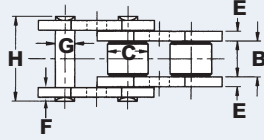
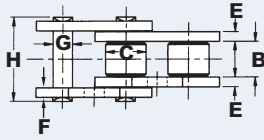
Chain No.	K-1 Across Attach Holes	A-1 C/L to Attach Hole	K-1 Overall Width	A-1 C/L to Attach End	Hole Diameter	Attachment Height	Tab Width	A-1 Additional Wgt/Att	K-1 Additional Wgt/Att
	T	T/2	U	U/2	d	h	w	Lbs/Pc	Lbs/Pc
40	1.024	0.512	1.433	0.717	0.142	0.311	0.374	0.003	0.006
50	1.291	0.646	2.000	1.000	0.209	0.406	0.500	0.009	0.018
60	1.567	0.783	2.350	1.175	0.209	0.469	0.626	0.014	0.028
80	2.067	1.033	3.319	1.659	0.265	0.626	0.751	0.030	0.060
100	2.500	1.250	3.412	1.706	0.329	0.781	1.000	0.059	0.118
120	3.000	1.500	4.405	2.203	0.408	0.906	1.133	0.105	0.210
140	3.500	1.750	4.970	2.485	0.469	1.125	1.375	0.157	0.314
160	4.000	2.000	5.656	2.828	0.547	1.250	1.500	0.214	0.428

Base Chain Dimensions

Chain No.	Pitch	Inside Width Min	Roller Diameter Max	Plate Height Max	Inner Plate Thickness Max	Outer Plate Thickness Max	Pin Diameter Max	Pin Length Max	Weight
	A	B	C	D	E	F	G	H	Lbs/Ft
40	0.500	0.309	0.312	0.461	0.071	0.059	0.157	0.665	0.45
50	0.625	0.370	0.400	0.575	0.095	0.079	0.200	0.831	0.75
60	0.750	0.495	0.469	0.689	0.127	0.094	0.235	1.063	1.16
80	1.000	0.620	0.625	0.906	0.160	0.118	0.313	1.327	1.94
100	1.250	0.744	0.750	0.996	0.173	0.157	0.376	1.598	2.45
120	1.500	0.993	0.875	1.408	0.189	0.189	0.437	1.941	3.35
140	1.750	0.993	1.000	1.641	0.221	0.221	0.500	2.083	4.63
160	2.000	1.242	1.125	1.874	0.250	0.250	0.563	2.484	6.17

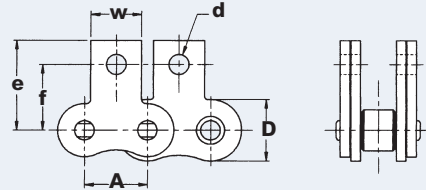
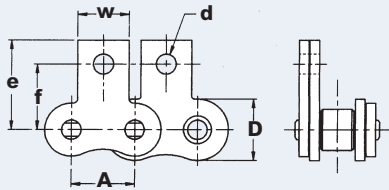
Syno® Attachment Chain

Straight Lug Attachments



SA-1

SK-1



SA-1 (Straight Lug 1 Side -1 Hole)

SK-1 (Straight Lug 2 Side -1 Hole)

Syno® SA-1 & SK-1 Attachment Dimensions

Dimensions are in inches unless otherwise indicated.

Chain No.	Hole Diameter	SA-1 / SK-1 C/L to Attach Top	SA-1 / SK-1 C/L to Attach Hole	Tab Width	SA-1 Additional Wgt/Att	SK-1 Additional Wgt/Att
	d	e	f	w	Lbs/Pc	Lbs/Pc
40	0.142	0.732	0.500	0.374	0.003	0.006
50	0.209	0.902	0.626	0.500	0.009	0.018
60	0.209	1.063	0.720	0.626	0.014	0.028
80	0.265	1.351	0.969	0.751	0.030	0.060
100	0.329	1.700	1.250	1.000	0.059	0.118
120	0.408	2.089	1.437	1.133	0.105	0.210
140	0.469	2.484	1.750	1.375	0.157	0.314
160	0.547	2.734	2.000	1.500	0.214	0.428

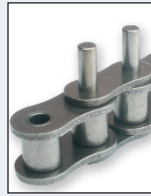
Base Chain Dimensions

Chain No.	Pitch	Inside Width Min	Roller Diameter Max	Plate Height Max	Inner Plate Thickness Max	Outer Plate Thickness Max	Pin Diameter Max	Pin Length Max	Weight
	A	B	C	D	E	F	G	H	Lbs/Ft
40	0.500	0.309	0.312	0.461	0.071	0.059	0.157	0.665	0.45
50	0.625	0.370	0.400	0.575	0.095	0.079	0.200	0.831	0.75
60	0.750	0.495	0.469	0.689	0.127	0.094	0.235	1.063	1.16
80	1.000	0.620	0.625	0.906	0.160	0.118	0.313	1.327	1.94
100	1.250	0.744	0.750	0.996	0.173	0.157	0.376	1.598	2.45
120	1.500	0.993	0.875	1.408	0.189	0.189	0.437	1.941	3.35
140	1.750	0.993	1.000	1.641	0.221	0.221	0.500	2.083	4.63
160	2.000	1.242	1.125	1.874	0.250	0.250	0.563	2.484	6.17

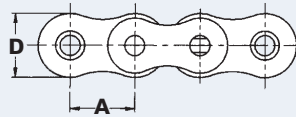
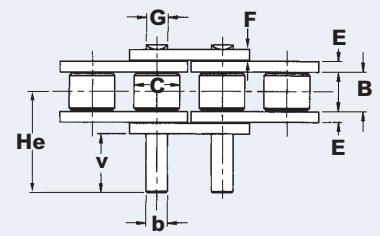
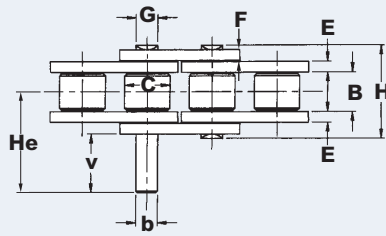
Extended Pin Attachments



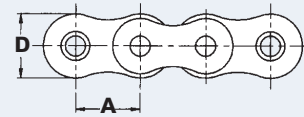
D-1



D-3



D-1 (1 Pin Extended Per Pin Link)



D-3 (2 Pins Extended Per Pin Link)

Syno® D-1 & D-3 Attachment Dimensions

Dimensions are in inches unless otherwise indicated.

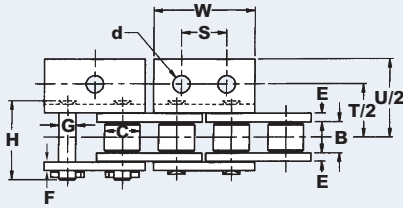
Chain No.	C/L to End of Ext Pin	Ext Pin Diameter	Ext Pin Projection	D-1 Additional Wgt/Att	D-3 Additional Wgt/Att
	He	b	v	Lbs/Pc	Lbs/Pc
40	0.678	0.156	0.383	0.003	0.006
50	0.842	0.200	0.468	0.004	0.008
60	1.046	0.235	0.562	0.007	0.014
80	1.354	0.313	0.751	0.015	0.030
100	1.670	0.375	0.938	0.026	0.052
120	2.015	0.437	1.125	0.044	0.088
140	2.271	0.500	1.312	0.066	0.132
160	2.652	0.563	1.500	0.099	0.198

Base Chain Dimensions

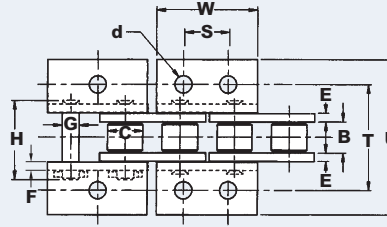
Chain No.	Pitch	Inside Width Min	Roller Diameter Max	Plate Height Max	Inner Plate Thickness Max	Outer Plate Thickness Max	Pin Diameter Max	Pin Length Max	Weight
	A	B	C	D	E	F	G	H	Lbs/Ft
40	0.500	0.309	0.312	0.461	0.071	0.059	0.157	0.665	0.45
50	0.625	0.370	0.400	0.575	0.095	0.079	0.200	0.831	0.75
60	0.750	0.495	0.469	0.689	0.127	0.094	0.235	1.063	1.16
80	1.000	0.620	0.625	0.906	0.160	0.118	0.313	1.327	1.94
100	1.250	0.744	0.750	0.996	0.173	0.157	0.376	1.598	2.45
120	1.500	0.993	0.875	1.408	0.189	0.189	0.437	1.941	3.35
140	1.750	0.993	1.000	1.641	0.221	0.221	0.500	2.083	4.63
160	2.000	1.242	1.125	1.874	0.250	0.250	0.563	2.484	6.17

Syno® Attachment Chain

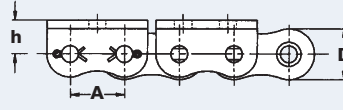
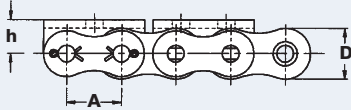
Bent Lug Wide Contour Attachments



WA-1 (Bent Lug 1 Side - 1 Hole)
WA-2 (Bent Lug 1 Side - 2 Holes)



WK-1 (Bent Lug 2 Sides - 1 Hole)
WK-2 (Bent Lug 2 Sides - 2 Holes)



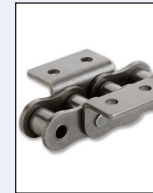
WA-1



WK-1



WA-2



WK-2

Syno® WA-1, WA-2 & WK-1, WK-2 Attachment Dimensions

Dimensions are in inches unless otherwise indicated.

Chain No.	WK-1 / WK-2 Across Attach Holes	WA-1 / WA-2 C/L to Attach Hole	WK-1 / WK-2 Overall Width	WA-1 / WA-2 C/L to Attach End	Hole Diameter	Attachment Height	Attachment Hole Pitch	Tab Width	WA-1 / WA-2 Additional Wgt/Att	WK-1 / WK-2 Additional Wgt/Att
	T	T/2	U	U/2	d	h	s	w	Lbs/Pc	Lbs/Pc
40	1.024	0.512	1.433	0.717	0.142	0.311	0.500	0.945	0.003	0.006
50	1.291	0.646	2.000	1.000	0.209	0.406	0.625	1.193	0.007	0.014
60	1.567	0.783	2.350	1.175	0.209	0.469	0.750	1.402	0.012	0.024
80	2.067	1.033	3.319	1.659	0.260	0.625	1.000	1.564	0.028	0.056
100	2.500	1.250	3.484	1.742	0.343	0.781	1.250	2.404	0.055	0.110

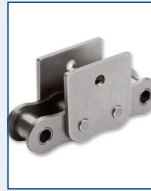
Base Chain Dimensions

Chain No.	Pitch	Inside Width Min	Roller Diameter Max	Plate Height Max	Inner Plate Thickness Max	Outer Plate Thickness Max	Pin Diameter Max	Pin Length Max	Weight
	A	B	C	D	E	F	G	H	Lbs/Ft
40	0.500	0.309	0.312	0.461	0.071	0.059	0.157	0.665	0.45
50	0.625	0.370	0.400	0.575	0.095	0.079	0.200	0.831	0.75
60	0.750	0.495	0.469	0.689	0.127	0.094	0.235	1.063	1.16
80	1.000	0.620	0.625	0.906	0.160	0.118	0.313	1.327	1.94
100	1.250	0.744	0.750	0.996	0.173	0.157	0.376	1.598	2.45

Straight Lug Wide Contour Attachments



WSA-1



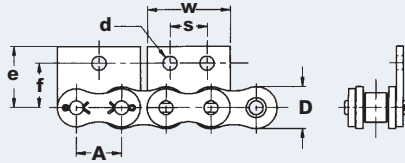
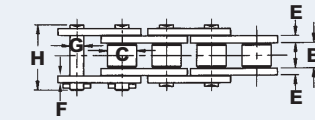
WSK-1



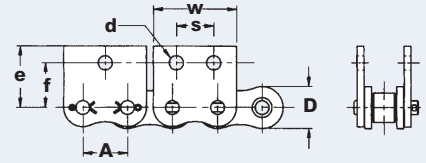
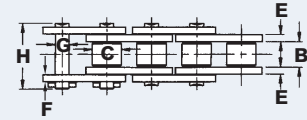
WSA-2



WSK-2



WSA-1 (Straight Lug 1 Side - 1 Hole)
WSA-2 (Straight Lug 1 Side - 2 Holes)



WSK-1 (Straight Lug 2 Sides - 1 Hole)
WSK-2 (Straight Lug 2 Sides - 2 Holes)

Syno® WSA-1, WSA-2 & WSK-1, WSK-2 Attachment Dimensions

Dimensions are in inches unless otherwise indicated.

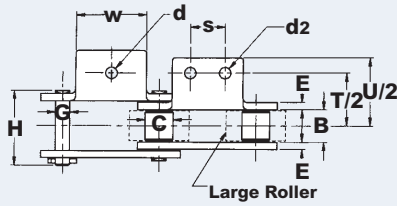
Chain	Hole Diameter	WSA-1 / WSA-2 WSK-1 / WSK-2 C/L to Attach Top	WSA-1 / WSA-2 WSK-2 / WSK-2 C/L to Attach Hole	Attachment Hole Pitch	Tab Width	WSA-1 / WSA-2 Additional Wgt/Att	WSK-1 / WSK-2 Additional Wgt/Att
	d	e	f	s	w	Lbs/Pc	Lbs/Pc
40	0.142	0.732	0.500	0.500	0.945	0.003	0.006
50	0.209	0.902	0.626	0.622	1.192	0.007	0.014
60	0.209	1.063	0.721	0.748	1.402	0.012	0.024
80	0.260	1.564	0.969	1.001	1.820	0.028	0.056
100	0.343	1.703	1.250	1.250	2.404	0.055	0.110

Base Chain Dimensions

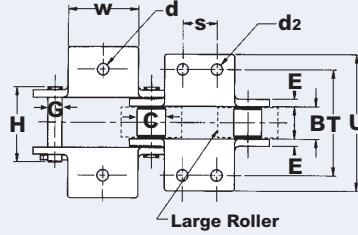
Chain No.	Pitch	Inside Width Min	Roller Diameter Max	Plate Height Max	Inner Plate Thickness Max	Outer Plate Thickness Max	Pin Diameter Max	Pin Length Max	Weight
	A	B	C	D	E	F	G	H	Lbs/Ft
40	0.500	0.309	0.312	0.461	0.071	0.059	0.157	0.665	0.45
50	0.625	0.370	0.400	0.575	0.095	0.079	0.200	0.831	0.75
60	0.750	0.495	0.469	0.689	0.127	0.094	0.235	1.063	1.16
80	1.000	0.620	0.625	0.906	0.160	0.118	0.313	1.327	1.94
100	1.250	0.744	0.750	0.996	0.173	0.157	0.376	1.598	2.45

Syno® Attachment Chain

Bent Lug Attachments



A-1 (Bent Lug 1 Side - 1 Hole)
A-2 (Bent Lug 1 Side - 2 Holes)



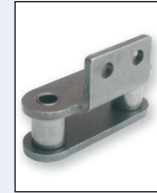
K-1 (Bent Lug 2 Sides - 1 Hole)
K-2 (Bent Lug 2 Sides - 2 Holes)



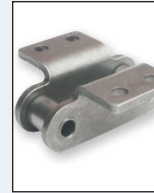
A-1



K-1



A-2



K-2

Syno® A-1, A-2 & K-1, K-2 Double Pitch Attachment Dimensions

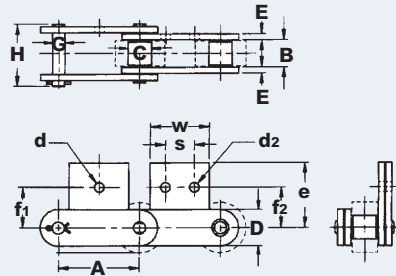
Dimensions are in inches unless otherwise indicated.

Chain No.	A-1 / K-1 Across Attach Holes	C/L to Attach Hole	A-1 / K-1 Overall Width	C/L to Attach End	A-1 / K-1 Hole Diameter	A-2 / K-2 Hole Diameter	C/L to Top of Attach	Attachment Hole Pitch	Tab Width	A-1 / A-2 Additional Wgt/Att	K-1 / K-2 Additional Wgt/Att
	T	T/2	U	U/2	d	d ₂	h	s	w	Lbs/Pc	Lbs/Pc
C2040	1.000	0.500	1.520	0.760	0.138	0.138	0.358	0.375	0.750	0.007	0.014
C2050	1.250	0.625	1.900	0.950	0.209	0.209	0.437	0.468	0.937	0.014	0.028
C2060	1.686	0.843	2.430	1.215	0.209	0.209	0.579	0.562	1.130	0.033	0.066
C2080	2.190	1.095	3.190	1.595	0.280	0.280	0.752	0.750	1.500	0.070	0.140

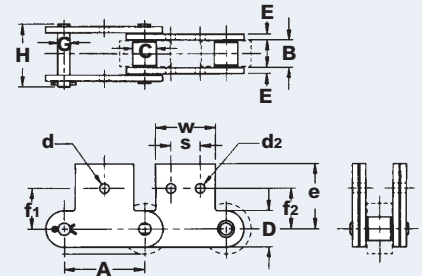
Base Chain Dimensions

Chain No.	Pitch	Inside Width Min	Roller Diameter Max	Plate Height Max	Plate Thickness Max	Pin Diameter Max	Pin Length Max	Weight
	A	B	C	D	E/F	G	H	Lbs/Ft
C2040	1.000	0.309	0.312	0.465	0.061	0.157	0.646	0.34
C2050	1.250	0.370	0.400	0.591	0.080	0.200	0.803	0.56
C2060	1.500	0.495	0.469	0.701	0.127	0.235	1.126	0.96
C2080	2.000	0.620	0.625	0.949	0.159	0.313	1.409	1.62

Straight Lug Attachments



SA-1 (Straight Lug 1 Side - 1 Hole)
SA-2 (Straight Lug 1 Side - 2 Holes)



SK-1 (Straight Lug 2 Sides - 1 Hole)
SK-2 (Straight Lug 2 Sides - 2 Holes)

Syno® SA-1, SA-2 & SK-1, SK-2 Double Pitch Attachment Dimensions

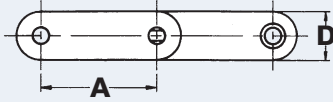
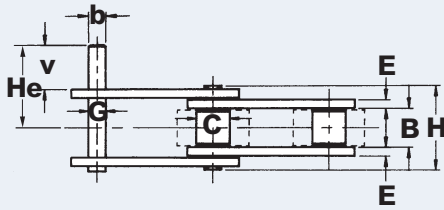
Chain	SA-1 / SK-1 Hole Diameter	SA-2 / SK-2 Hole Diameter	C/L to Attach End	SA-1 / SK-1 C/L to Attach Hole	SA-2 / SK-2 C/L to Attach Hole	Attachment Hole Pitch	Tab Width	SA-1 / SA-2 Additional Wgt/Att	SK-1 / SK-2 Additional Wgt/Att
	d	d ₂	e	f ₁	f ₂	s	w	Lbs/Pc	Lbs/Pc
C2040	0.209	0.138	0.783	0.437	0.531	0.375	0.750	0.007	0.014
C2050	0.280	0.209	0.969	0.563	0.626	0.468	0.937	0.014	0.028
C2060	0.331	0.209	1.189	0.689	0.748	0.562	1.130	0.033	0.066
C2080	0.409	0.280	1.594	0.874	1.000	0.750	1.500	0.070	0.140

Base Chain Dimensions

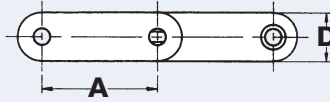
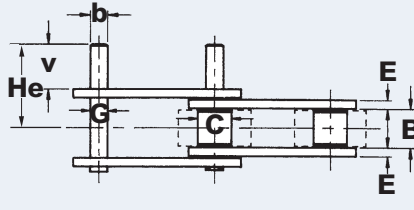
Chain No.	Pitch	Inside Width Min	Roller Diameter Max	Plate Height Max	Plate Thickness Max	Pin Diameter Max	Pin Length Max	Weight
	A	B	C	D	E/F	G	H	Lbs/Ft
C2040	1.000	0.309	0.312	0.465	0.061	0.157	0.646	0.34
C2050	1.250	0.370	0.400	0.591	0.080	0.200	0.803	0.56
C2060	1.500	0.495	0.469	0.701	0.127	0.235	1.126	0.96
C2080	2.000	0.620	0.625	0.949	0.159	0.313	1.409	1.62

Syno® Attachment Chain

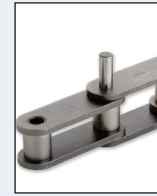
Extended Pin Attachments



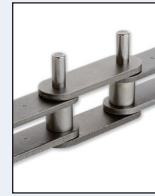
D-1 (1 Pin Extended Per Pin Link)



D-3 (2 Pins Extended Per Pin Link)



D-1



D-3

Syno® D-1 & D-3 Double Pitch Attachment Dimensions

Dimensions are in inches unless otherwise indicated.

Chain No.	C/L to End of Ext Pin	Ext Pin Diameter	Ext Pin Projection	D-1 Additional Wgt/Att	D-3 Additional Wgt/Att
	He	b	v	Lbs/Pc	Lbs/Pc
C2040	0.988	0.156	0.374	0.003	0.006
C2050	1.228	0.200	0.469	0.004	0.008
C2060	1.642	0.235	0.563	0.007	0.014
C2080	2.100	0.313	0.752	0.015	0.030

Base Chain Dimensions

Chain No.	Pitch	Inside Width Min	Roller Diameter Max	Plate Height Max	Plate Thickness Max	Pin Diameter Max	Pin Length Max	Weight
	A	B	C	D	E/F	G	H	Lbs/Ft
C2040	1.000	0.309	0.312	0.465	0.061	0.157	0.646	0.34
C2050	1.250	0.370	0.400	0.591	0.080	0.200	0.803	0.56
C2060	1.500	0.495	0.469	0.701	0.127	0.235	1.126	0.96
C2080	2.000	0.620	0.625	0.949	0.159	0.313	1.409	1.62