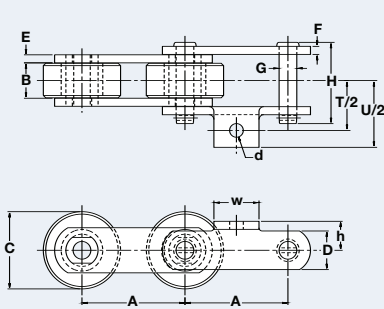


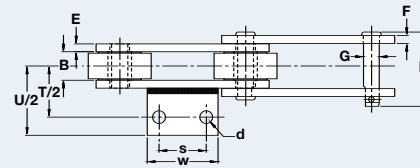
Looper Chain

Maximize your manufacturing operation. Renold Jeffrey Looper Chains are designed to optimize your roofing manufacturing equipment. Looper Chains are constructed from high-grade steel. Pins and rollers are crafted to maximize performance and wear life. And we offer a wide range of attachments so you get the right chain for your operation. High speeds and high volumes place great demands on your operation. Count on Renold Jeffrey to deliver.

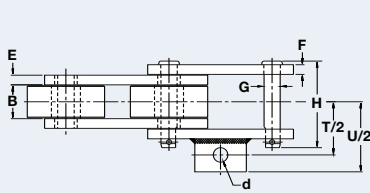




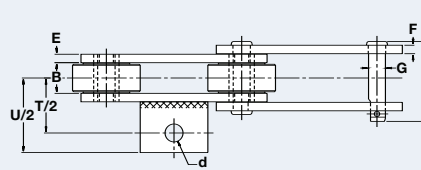
A-1 Attachment



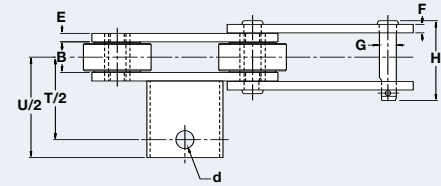
A-11 Attachment



A-42 Attachment



A-63 Attachment



Pipe Attachment

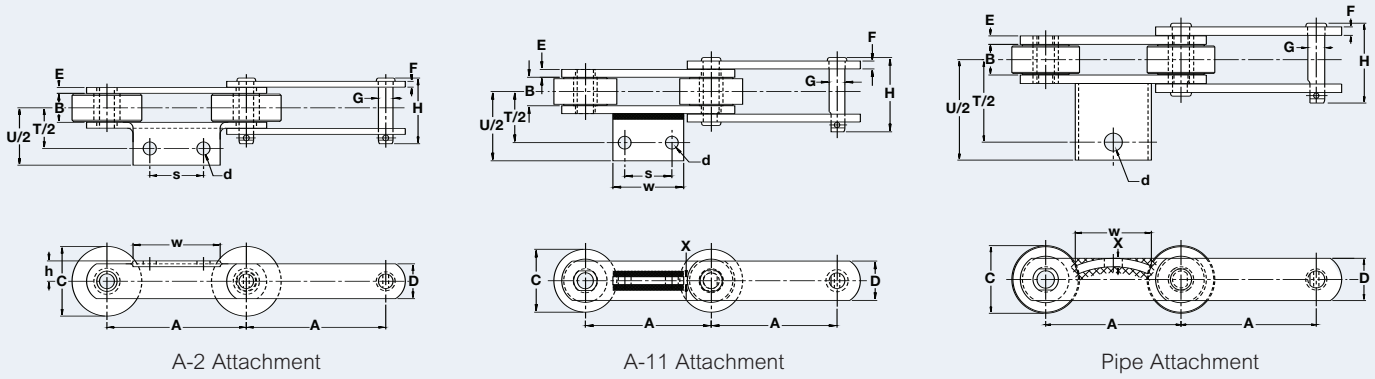
Engineering Class Looper Chain

Dimensions are in inches unless otherwise indicated.

Chain No.	Att. Type	Pitch	Inner Width Max	Roller Diam Max	Plate Height Max	Inner Plate Thick Max	Outer Plate Thick Max	Pin Diam Max	Pin Length Max								Average Ultimate Strength	Rated Working Load
		A	B	C	D	E	F	G	H	T/2	U/2	X	d	h	s	w	Lbs	Lbs
SS4	A-11	4.000	0.906	1.500	1.250	0.250	0.250	0.500	2.359	1.625	2.280	0.250	0.340	—	1.500	2.500	19,000	2,450
	A-63												2.187			0.531		
2904	A-11	4.000	0.906	2.000	1.250	0.250	0.250	0.500	2.359	1.625	2.203	0.250	0.406	—	1.500	2.250	19,900	2,450
	A-63												2.219			0.531		
2904	Pipe	4.000	0.906	2.000	1.250	0.250	0.250	0.500	2.359	2.438	2.970	0.250	0.531	—	—	2.250	19,900	2,450
2909B	Pipe	4.000	1.310	2.000	1.500	0.250	0.250	0.560	2.880	2.620	3.170	0.250	0.531	—	—	2.250	25,500	3,500
2405PC	A-42	4.000	1.313	3.000	1.500	0.375	0.375	0.625	3.359	2.063	2.718	0.250	0.563	—	—	2.000	42,500	4,500
2403P	A-1	4.000	1.375	3.000	1.750	0.313	0.313	0.688	3.156	1.938	2.594	—	0.531	1.125	—	1.750	58,000	5,500

Contact the Engineering Department for special materials, heat-treatment, and extended wear applications.

Contact Renold Jeffrey for weight specifications and for verification as dimensions are subject to change.



Engineering Class Looper Chain

Dimensions are in inches unless otherwise indicated.

Chain No.	Att. Type	Pitch	Inner Width Max	Roller Diam Max	Plate Height Max	Inner Plate Thick Max	Outer Plate Thick Max	Pin Diam Max	Pin Length Max									Average Ultimate Strength	Rated Working Load
		A	B	C	D	E	F	G	H	T/2	U/2	X	d	h	s	w	Lbs	Lbs	
3630PB	A-2	6.000	1.250	3.000	1.500	0.250	0.250	0.625	2.828	1.750	2.469	—	0.562	0.875	2.313	3.750	36,000	3,800	
2203PC	Pipe	6.000	1.313	3.000	1.500	0.313	0.313	0.625	3.203	2.688	3.313	0.250	0.531	—	—	2.250	40,500	4,200	
5620C	A-11	8.000	1.313	3.000	1.500	0.375	0.375	0.625	3.328	2.750	3.422	0.250	0.406	—	2.000	4.000	37,500	4,500	

Contact the Engineering Department for special materials, heat-treatment, and extended wear applications.

Contact Renold Jeffrey for weight specifications and for verification as dimensions are subject to change.