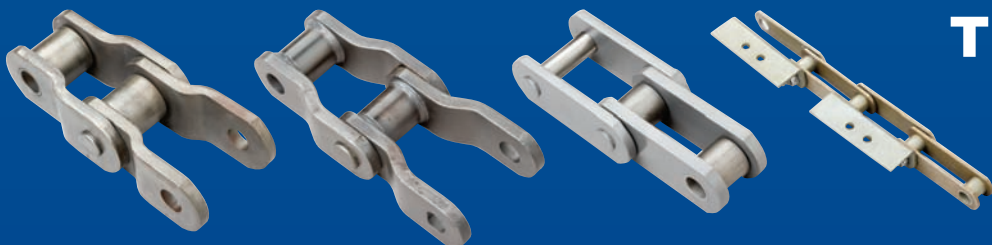


**RENOLD
JEFFREY**



Theme Park Chain

Safety First

Renold Jeffrey Theme Park Chain



Keep your rides running longer

- Roller coasters
- Water rides
- Carousels
- Free-fall lifts

Renold Jeffrey has more than 120 years of experience, and our chains are used in many theme parks around the world. We build chains of the highest quality to provide longer wear life and better return on your investment.

We also understand the safety requirements of the theme park industry, and design and manufacture our chains to ensure reliable, trouble-free operation in service.

Designed to meet your requirements

Renold Jeffrey starts with strong, long-lasting chains and offers customized solutions to meet your needs.

Standard theme park chains:

- Excellent fatigue life and wear resistance
- High reliability
- Full technical support service

Customized solutions include:

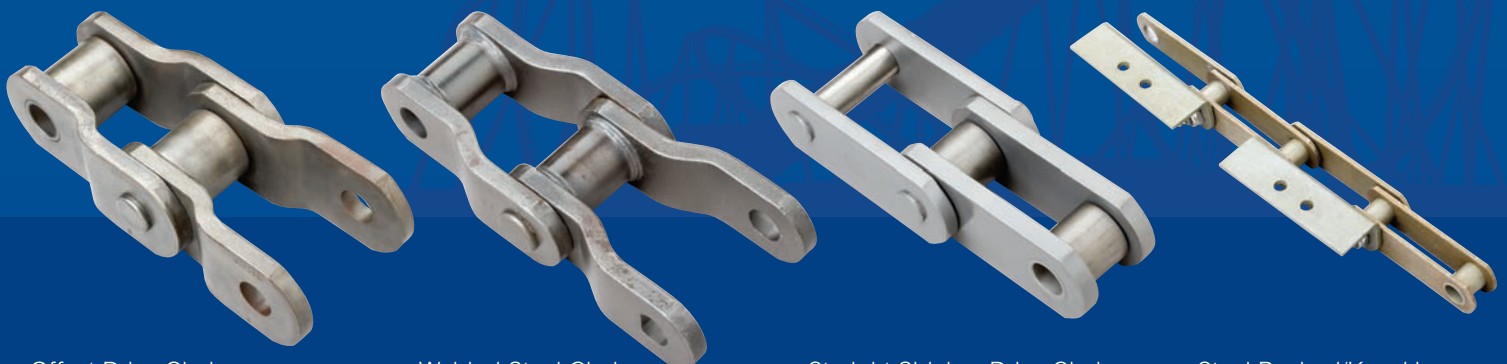
- Special lubrication options
- Plating choices, including Hydro-Service® and zinc coating
- Wide range of attachments
- Wide range of pin-fixing methods

Renold Jeffrey theme park chains improve your operation

Heavy-Duty Sprockets

Renold Jeffrey's replaceable sprockets are steel carved and flame hardened for long service life. Tooth and rim sections are easily replaced, reducing downtime for maintenance.

- Solid Sprockets
- Segmental Sprockets
- Split Sprockets
- Traction Wheels



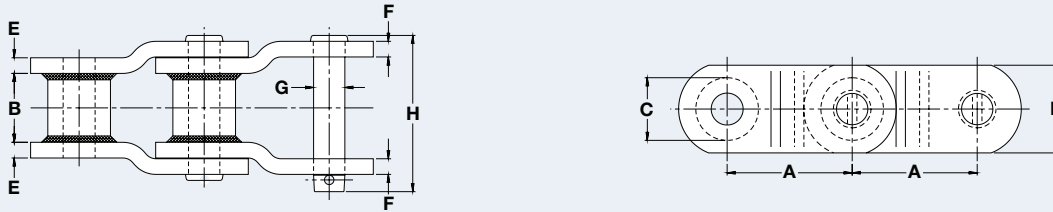
Offset Drive Chain

Welded Steel Chain

Straight Sidebar Drive Chain

Steel Bushed/Knuckle Water Ride Chain

Theme Park Chain

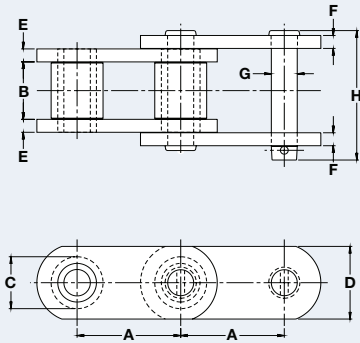


Welded Steel Type Lift Chain

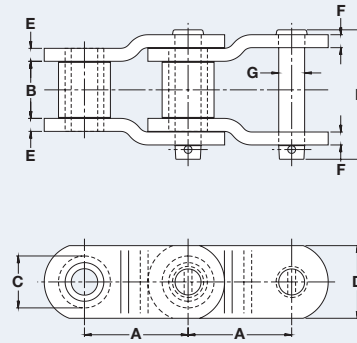
Dimensions are in inches unless otherwise indicated.

Chain No.	Pitch	Inner Width Max	Barrel Diam Max	Plate Height Max	Plate Thick Max	Pin Diam Max	Pin Length Max	Average Ultimate Strength	Rated Working Load	Weight
	A	B	C	D	E/F	G	H	Lbs	Lbs	Lbs/Ft
WS82TP*	3.075	1.750	1.219	1.250	0.250	0.563	3.219	37,500	4,400	5.60
WS124PTP	4.000	2.063	1.438	1.500	0.375	0.750	4.188	60,000	7,350	8.50
WS124HDPTP*	4.063	2.000	1.625	2.000	0.500	0.875	4.670	114,500	9,150	13.64
WS126TP	4.080	2.000	1.750	2.000	0.500	1.000	4.703	101,000	10,500	14.30
WS126HTP	4.080	2.000	1.750	2.250	0.500	1.000	4.578	140,000	10,500	15.60
WS132PTP	6.050	3.375	1.750	2.000	0.500	1.000	5.953	100,000	14,500	13.50
WS132ATP (ALLOY)	6.050	3.375	1.750	2.000	0.500	1.000	6.172	138,500	15,300	13.50
WS855ATP (ALLOY)	6.050	3.313	1.750	2.500	0.563	1.125	6.156	205,000	17,450	14.50

*Can be furnished with oil hole in bushing



Style S (Straight Sidebar)



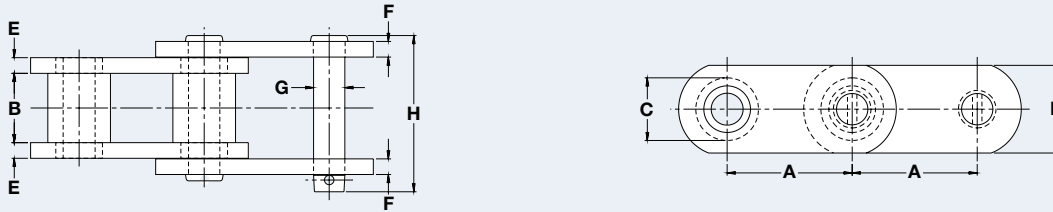
Style O (Offset Sidebar)

Roller Type Lift Chain

Dimensions are in inches unless otherwise indicated.

Chain No.	Sidebar Style	Pitch	Inner Width Max	Roller Diam Max	Plate Height Max	Inner Plate Thick Max	Outer Plate Thick Max	Pin Diam Max	Pin Length Max	Average Ultimate Strength	Rated Working Load	Weight
		A	B	C	D	E	F	G	H	Lbs	Lbs	Lbs/Ft
JS4014TP	O	4.063	1.938	1.750	2.250	0.500	0.500	0.875	4.453	140,000	9,000	15.40
4073ATP	S	4.073	2.062	1.781	2.375	0.500	0.562	0.938	4.590	170,000	10,500	15.60
JS4080TP	O	4.080	1.938	1.750	2.250	0.500	0.500	0.875	4.710	140,000	9,000	15.50
3605TP	S	6.050	3.375	1.750	2.000	0.500	0.500	0.875	6.047	110,000	13,400	15.50

Theme Park Chain

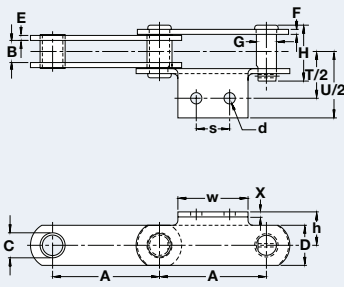


Steel Bushed/Knuckle Type Lift Chain

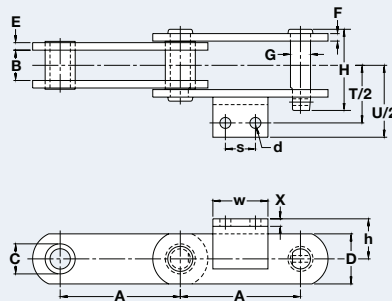
Dimensions are in inches unless otherwise indicated.

Chain No.	Pitch	Inner Width Max	Bushing/Knuckle Diam Max	Plate Height Max	Inner Plate Thick Max	Outer Plate Thick Max	Pin Diam Max	Pin Length Max	Average Ultimate Strength	Rated Working Load	Weight
	A	B	C	D	E	F	G	H	Lbs	Lbs	Lbs/Ft
6102-1/2-MTP	4.040	2.188	1.375	1.750	0.375	0.375	0.750	4.313	70,000	7,900	9.20
6099TP*	4.040	2.250	1.375	2.000	0.375	0.375	0.875	4.270	72,000	9,200	10.70
6100TP*	4.040	2.250	1.375	2.250	0.375	0.375	0.875	4.125	110,000	9,200	12.17
6440TP	4.040	1.375	1.500	2.500	0.375	0.375	1.000	3.188	97,000	7,400	12.30
6111TP	4.760	2.620	1.440	2.000	0.375	0.375	0.750	4.660	50,000	9,300	11.20
6050TP	6.050	3.125	1.750	3.000	0.500	0.500	1.000	5.703	177,000	14,400	19.40

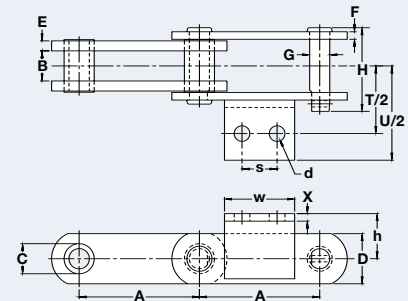
*Can be furnished with oil holes in the bushing/knuckle.



6233RC with A-2 Attachment



6247B with A-2 1/2 Attachment



6248PB with A-2 1/2 Attachment

Steel Bushed/Knuckle Type Water Ride Chain

Dimensions are in inches unless otherwise indicated.

Chain No.	Pitch	Inner Width Max	Bushing/Knuckle Diam Max	Plate Height Max	Inner Plate Thick Max	Outer Plate Thick Max	Pin Diam Max	Pin Length Max								Average Ultimate Strength	Rated Working Load	Weight
	A	B	C	D	E	F	G	H	T/2	U/2	X	d	h	s	w	Lbs	Lbs	Lbs/Ft
6233RC** A-2	4.000	0.830	0.940	1.500	0.190	0.190	0.750	2.330	1.750	2.480	—	0.420	1.250	1.250	2.620	16,000	3,400	4.80
6247B A-2 1/2	6.000	1.520	1.500	2.500	0.375	0.375	1.000	4.280	2.870	3.590	0.375	0.546	2.000	1.500	2.750	55,000	8,350	12.10
6248PB A-2 1/2	6.000	1.500	1.500	2.500	0.500	0.375	1.000	4.172	3.375	4.703	0.375	0.781	2.250	1.750	3.500	116,000	9,200	14.20

**Can be furnished with full A-2 Attachment

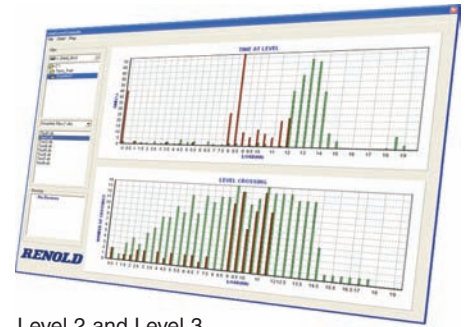
Water Ride Chains can be furnished with zinc or Hydro-Service® plating, lube fittings, and locknuts on connecting links.

Improve Your Operation with Exclusive Renold Smartlink™ Technology

Renold Smartlink™ is a patented, state-of-the-art microprocessor that monitors your application. Renold Smartlink™ was created to improve the understanding of the complex loading involved in drive and lift operations like roller coasters. The device operates through the full chain cycle to identify peak stress conditions and to facilitate optimum design. You get information that helps you increase safety and reduce operating costs.

Innovative, preventative maintenance technology at work

- Ensure smooth running of your chain drive
- Increase safety
- Reduce downtime and maintenance
- Diagnose alignment problems
- Identify potential trouble areas



Level 2 and Level 3



Level 3 and PDA



Level 1 and Level 2

Choose from three levels of performance.

Level 1

Smartlink™ Level 1 acts as an overload detector. The unit, controlled with a small infrared remote control unit, indicates when your chain exceeds a predetermined load. This gives you the warning you need to inspect the system and make sure it is safe to continue running.

1

Level 2

Smartlink™ Level 2 provides more sophisticated data via an upgrade to the remote, handheld receiver. This unit allows you to download more detailed information and transfer it to a Windows-based PC. The data can be analyzed to determine the exact load and location of peaks in the drive system, allowing you to more accurately pinpoint problems.

2

Level 3 — Especially for roller coasters

Smartlink™ Level 3 is ideal for systems with recurring problems or for safety-critical applications, like roller coasters, where an accurate prediction of load and fatigue life is vital. This is the most sophisticated system available and requires expert support from a Renold engineer.

3

Renold Jeffrey Theme Park Chains Quality and Safety

- Keep your roller coasters and water rides running longer
- Proven reliability in theme parks around the world
- Excellent value for your investment
- Wide range of sizes to meet your needs — for coasters from 3.075" pitch to 6.050" pitch and water rides from 4.000" pitch to 12.4" pitch
- Heavy-duty replaceable sprockets — solid, split, segmental, and traction wheels



Corporate Headquarters

2307 Maden Drive
Morristown, TN 37813

Tel: (423) 586-1951
Tel: (800) 251-9012
Fax: (423) 581-2399

National Service Center

2305 Global Way
Hebron, KY 41048

Tel: (859) 334-8520
Tel: (800) 251-9012
Fax: (859) 334-8550

West Coast Service Center

2301 A Stagecoach Rd.
Stockton, CA 95215

Tel: (209) 466-4646
Tel: (800) 251-9012
Fax: (209) 466-1749

**RENOLD
JEFFREY**

Advancing Chain Technology

www.renoldjeffrey.com

