



Renold Trident Chain

For Theme Park Rides

- Up to 4x more corrosion resistant than standard zinc plated chain*
- Lubrication free
- Superior wear resistance

* in salt spray tests

RENOLD

www.renold.com

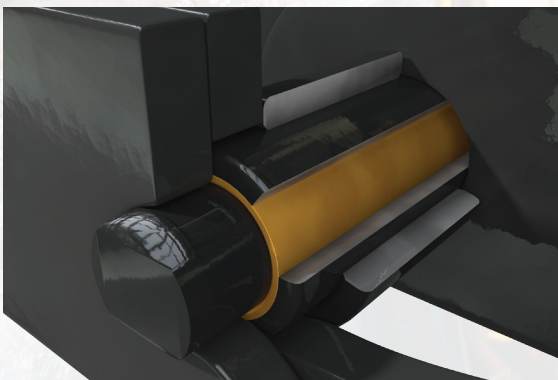
Renold Trident Chain

For Theme Park Rides

Renold has extensive experience in supplying theme parks around the world with conveyor chain for theme park rides, from roller coasters to water rides. Through continuous research and development and examining the common causes of chain failure in corrosive environments, Renold has developed the Trident Chain series to tackle the three main areas of failure in such environments: corrosion, seizure and wear

Tackling Corrosion

Due to constant exposure to water, corrosion is often an issue on water ride chains. To address this, Renold has developed a dual process surface treatment to increase corrosion resistance. The zinc based specialised coating offers superior protection of the steel – even when the coating is penetrated, the treatment continues to offer superior corrosion resistance over other surface treatments.

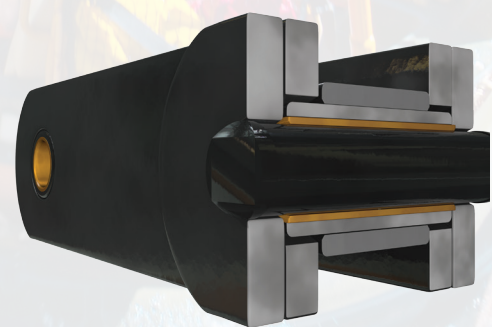


Eliminating Seizure

Transfer and lift chain on rides can suffer from seizure of the bush and pin and significantly shorten the life of the chain. Through the development of a unique polymer sleeve, metal-to-metal contact is reduced, thereby eliminating the risk of the bush and pin seizure. This also provides lubrication-free operation and removes the need for any lubrication ports.

Reducing Wear

Development of a heavy wall bush design overcomes premature wear and failure of the bush, and in most cases a shell roller can also be incorporated which reduces wear on sprocket teeth; increasing life of both the sprocket and chain – and reducing maintenance time and cost.



Additional Benefits

- Integral attachment design – eliminates attachment/plate corrosion issues
- Smoother and quieter operation than standard water ride chain
- Operates on the same sprockets and track as standard chain.
- Superior breaking load and working load

For more information on Renold Trident, contact us today on + 44 (0)161 498 4600 or email trident.chain@renold.com

NOTE: Polymer sleeve highlighted in yellow for illustration purposes only.