

**RENOLD**  
**JEFFREY**

Renold Roller Chain

**Quality Driven**  
from the Very First Link

Enhance performance  
Eliminate downtime  
Extend operating life



RENOLD  
60

The global leader in roller chain technology

# Renold Roller Chain

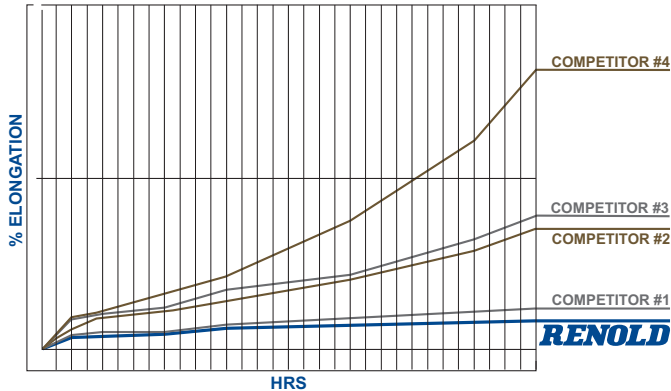
- First in chain
- First in quality
- First in performance
- First in value

Renold has led the advancement of chain technology ever since Hans Renold invented the first roller chain in 1878. Over the past 100+ years, we've perfected design, materials, and manufacturing techniques to build products with maximum fatigue strength and wear life. Renold chains outperform and outlast the competition in nearly every industry imaginable. Turn our experience into your advantage.

- **Reduced operating costs**
- **Less downtime for maintenance**
- **Increased productivity**

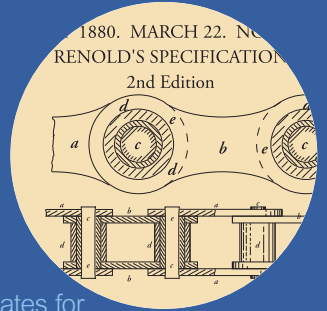
## Your Link to Longer Wear Life

### Wear Resistance Test #80 Riveted



The increased wear resistance of Renold roller chain is evident right out of the box. Top-grade factory pre-lubrication, accurate press fits, and precision-tolerance bushings minimize break-in time. The result? Maximum fatigue life!

# Renold History Timeline



**1880** Patented the bushed roller chain — the first in the world.

**1915** Introduced wide-waist link plates for maximum fatigue strength.

**1917** Introduced tapered bushings, which maximize pin/bushing bearing area for improved break-in wear.

**1981** Began cold extrusion of solid bushings — first to manufacture solid bushings/solid rollers across full range of products.



**2003** Launched Synergy® — the industry standard in wear life.



**2004** Launched Syno® — unmatched features and performance in maintenance-free chain.

**2006** Introduced unique end-softened pins across full range of products for easy assembly/disassembly in the field.



Renold  
Quality



# You know you're the leader when others follow.

Renold Jeffrey — the inventor of precision solid bushing roller chain.

## Solid bushings and rollers maximize wear life — keeping your lines up and running longer.

- Renold bushings and rollers are solid on sizes #35 through #240. That means they won't distort or open up like our competitors' curled and split bushings and rollers — even under the heaviest loads.
- Shot-peened rollers offer superior fatigue strength to keep lines running smoothly at high speeds.
- Our special tapered-bushing design corrects for assembly distortion, **virtually eliminating initial stretch**.
- Maximized contact area between pins and bushings reduce bearing pressures to enhance performance and reduce wear.
- Precise heat treatment provides the optimum combination of toughness and wearability.



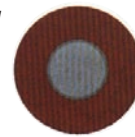
## Renold pins are uniquely designed for easy installation and rugged performance.

- **Exclusive new feature!** Renold has developed unique pin ends to get your lines up and running faster than ever before! Our innovative design lets you cut to length quickly and cleanly with less risk of damaging the chain.
- **Makes cottered chain obsolete.**
- Pins are made from specially selected alloy steel, which means they're built to last.
- Case-hardened pins and bushings reduce wear and extend chain life.

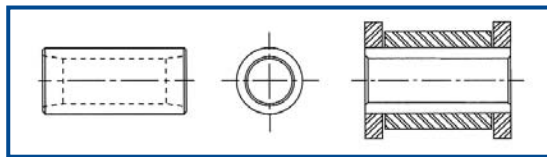


### Chain Pin, sectioned and etched

The dark outer ring represents the high-hardness, carburized (case-hardened) wear resistance zone.

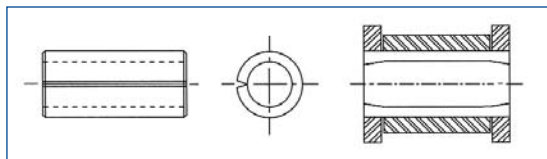


## Renold Roller Chain



Tapered bushings ensure a straight inner diameter after assembly, removing the need for initial adjustment.

## Competitors' Brands



The inner diameters of straight bushings are prone to collapse during assembly, causing rapid initial stretch and time-consuming adjustments.

## Link plates are built for superior fatigue strength.



Renold link plates are wider than the traditional figure-eight style of competitors' chains for longer fatigue life and superior strength.

- Renold link plate shape and hole profiles are computer modeled to optimize stress distribution for greater fatigue performance.
- Ball drifted holes prevent cracks from spreading, ensuring quality press fits with tolerances that minimize wear.
- Shot peening extends fatigue resistance for longer, smoother performance at maximum loads.

**RENOLD  
JEFFREY**

# Renold Roller Chain

When quality counts, count on Renold.

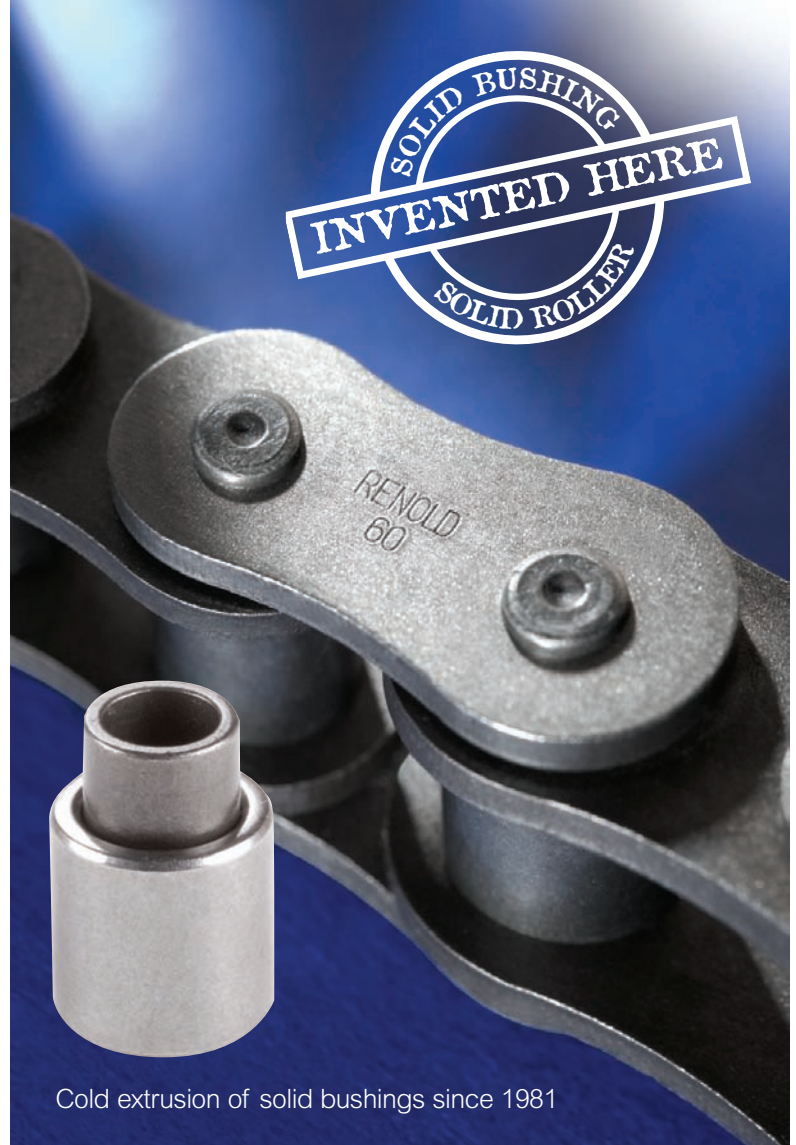
**Renold precision roller chain lasts longer and reduces downtime. Turn our experience into your advantage.**

- Enhance performance
- Reduce downtime
- Extend operating life

## Long history. Longer performance

Renold, inventor of the original bushed roller chain, has continued to innovate roller chain performance since the day the idea was born. As the most complete, experienced chain company in the industry, our long history of chain knowledge means a clear focus on creating better chain products, service, and support.

**RENOLD**



Cold extrusion of solid bushings since 1981

### Headquarters

2307 Maden Drive  
Morristown, TN 37813

Tel: (423) 586-1951  
Tel: (800) 251-9012  
Fax: (423) 581-2399

### National Service Center

2305 Global Way  
Hebron, KY 41048

Tel: (859) 334-8520  
Tel: (800) 251-9012  
Fax: (859) 334-8550

### West Coast Service Center

2301 A Stagecoach Rd.  
Stockton, CA 95215

Tel: (209) 466-4646  
Tel: (800) 251-9012  
Fax: (209) 466-1749

**RENOLD  
JEFFREY**

Advancing Chain Technology

[www.renoldjeffrey.com](http://www.renoldjeffrey.com)

**PTDA**  
Member